

# Broadband March 2025

## Team Members

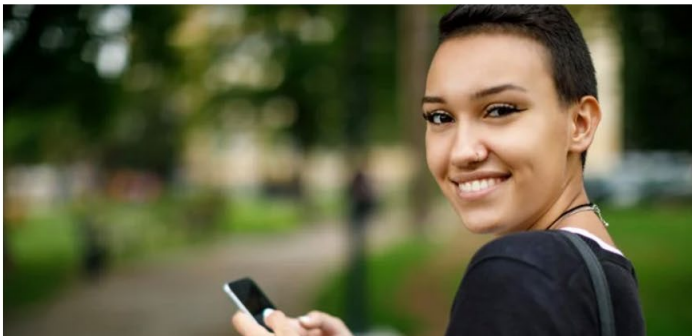
- Kate Fosburgh, Digital Access Analyst
- Katherine DiPasqua, Director

## North Bay/North Coast Broadband Consortium (NBNCBC)

- California Advanced services Fund (CASF) Consortia Grant:
  - As part of an effort to increase visibility and community engagement, the NBNCBC has completed a website redesign and branding with Studio B. The website includes resources for the public, internet service providers, and other stakeholders to learn more about broadband efforts in the region and contact NBNCBC for infrastructure planning support. Learn more at [nbncbc.org](http://nbncbc.org).
  - NBNCBC also sent out the first in a new series of Quarterly Newsletters.



[ABOUT US](#) [CURRENT INITIATIVES](#) ▾ [GRANTS](#) [MAPPING](#) [LIBRARY](#) [CONTACT](#)



## Regional Initiatives

Given the high cost of deploying fiber optic cable, particularly in the low-population density, rural, coastal and mountainous areas found within the Member Counties, alternatives are being considered, including fixed wireless.

## Advanced Adoption

- Internet Subsidy Program
  - EDC is partnering with Comcast to provide 556 low-income households in Sonoma County with free internet at a speed of 100/20 mbps for a period of one year.
  - On March 11<sup>th</sup> the Sonoma County Board of Supervisors approved the housing sites listed below as eligible for the free internet program.
  - Eligible sites were selected among affordable housing properties and prioritize housing for seniors, families, low-income workers, and unhoused individuals and families. The EDC will be working with MidPen Housing, Burbank Housing, West County Community Services, and Comcast to implement the program.

### Approved Sites

Name of Property	City	Housing Type	No. of Units	District
Springs Village	Sonoma	Family + Low-Income Worker	80	1
Celestina Garden Apts.	Sonoma	Senior	40	1
Fetters Apartments*	Sonoma	Family	60	1
414 Petaluma	Petaluma	Supportive + Low-Income Worker	44	2
Logan Place	Petaluma	Family	66	2
Vida Nueva*	Rohnert Park	Supportive	24	2
Crossroads Apts.	Santa Rosa	Family	79	3
Carrillo Place Apts.	Santa Rosa	Family	68	3
Larkfield Oaks	Santa Rosa	Family	56	4
Harvest Grove Apts.	Healdsburg	Family + Low-Income Worker	44	4
Park Land Senior Apts.*	Healdsburg	Senior	24	4
Fife Creek Commons	Guerneville	Family	48	5
Elderberry Commons	Sebastopol	Supportive	31	5
George's Hideaway*	Guerneville	Supportive	21	5

*\* Alternate or backup property should additional subscriptions become available. Subscriptions will be distributed on a first come first served basis.*