

# Healthcare

## Jan - Dec 24

### HIGHLIGHTS

**\$82,528**

Average earnings per job within occupations that span the Healthcare sector.

**\$34.34/Hr**

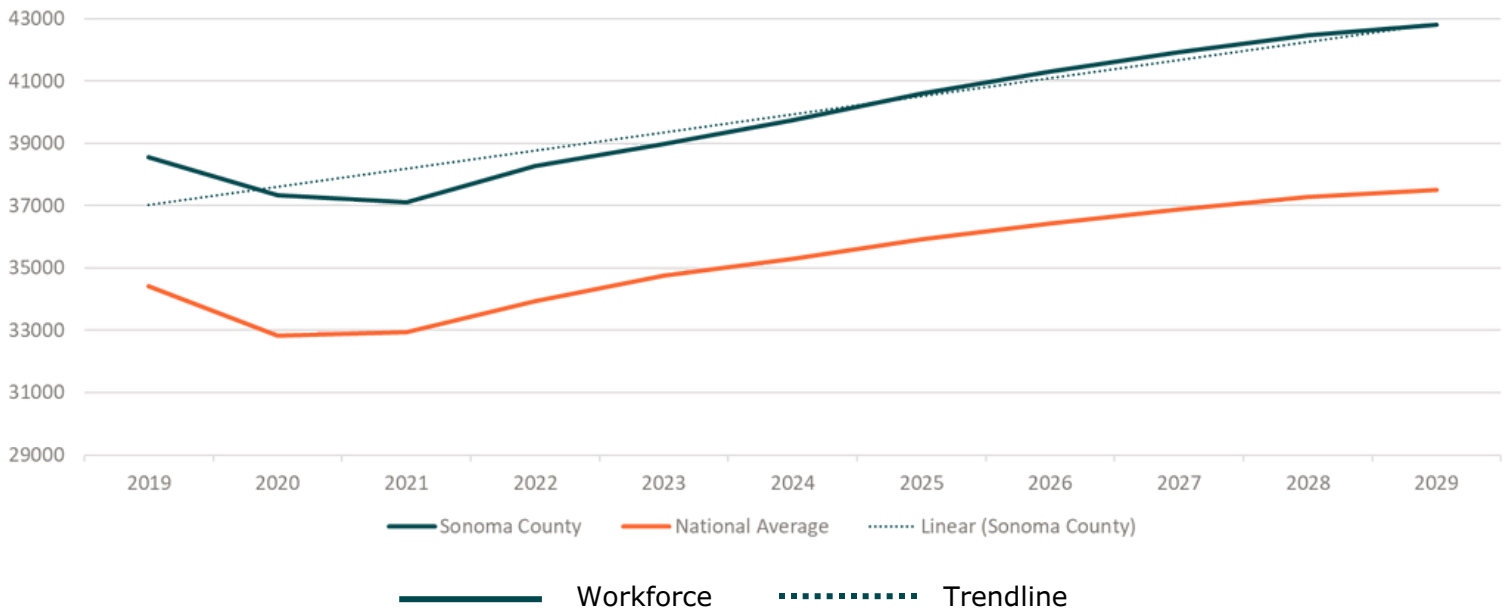
Median advertised hourly wage for healthcare jobs in Sonoma County.

**\$3.9 Billion**

Total Gross Regional Product (GRP) in 2024, representing approx. **10%** of the region's total economic output.

### Employment Forecast, Sonoma County

Healthcare, (2019 - 2029)



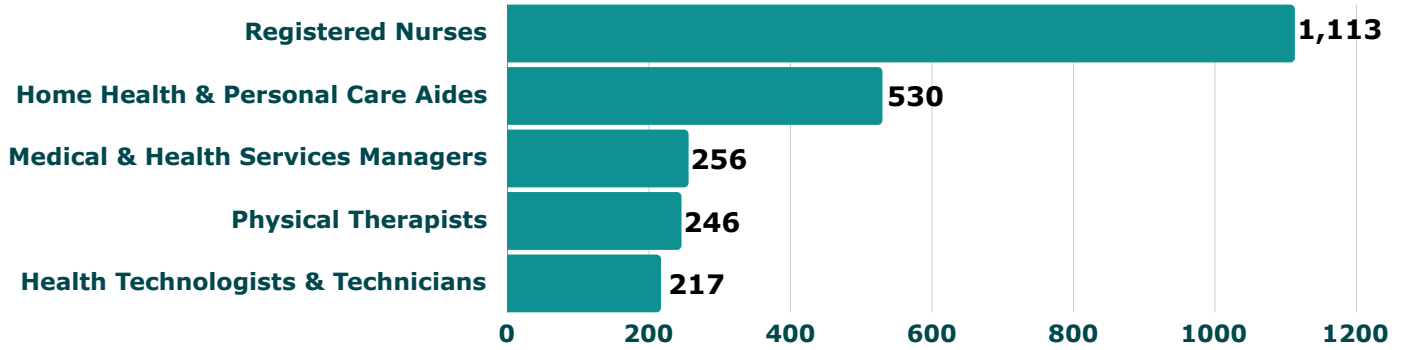
### Projected Employment

- An **8% avg. increase** in payroll is anticipated in Sonoma County over the next 4 years, **increasing from 39,751 in 2024 to 42,794 by 2029**. This trend coincides with the national average.

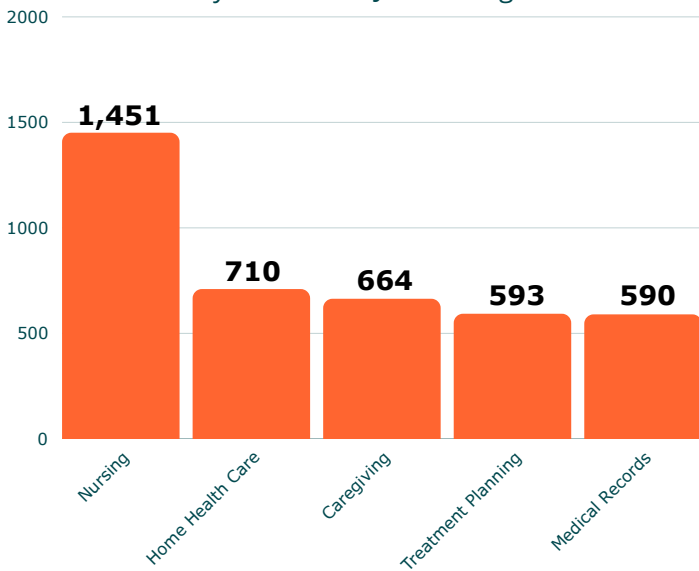
### Posting Data

- 51%** of unique job postings listed **no education**, **23% listed 0-1 years**, and **20% included 2-3 years**. These metrics are anticipated to remain consistent over the next several quarters.

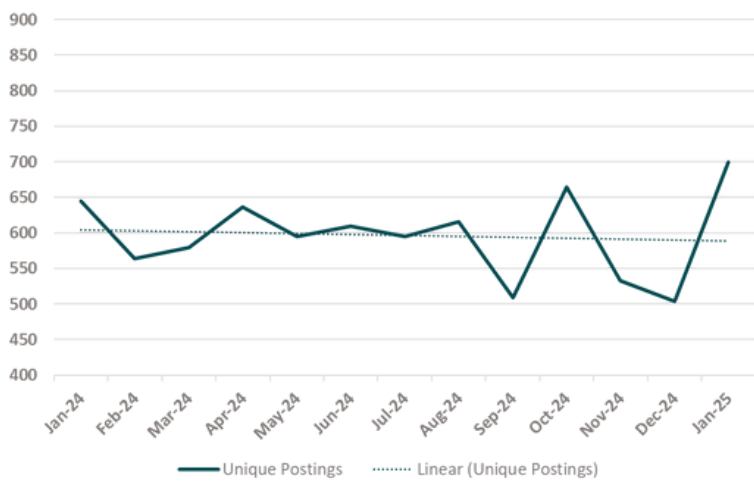
## Top Job Postings



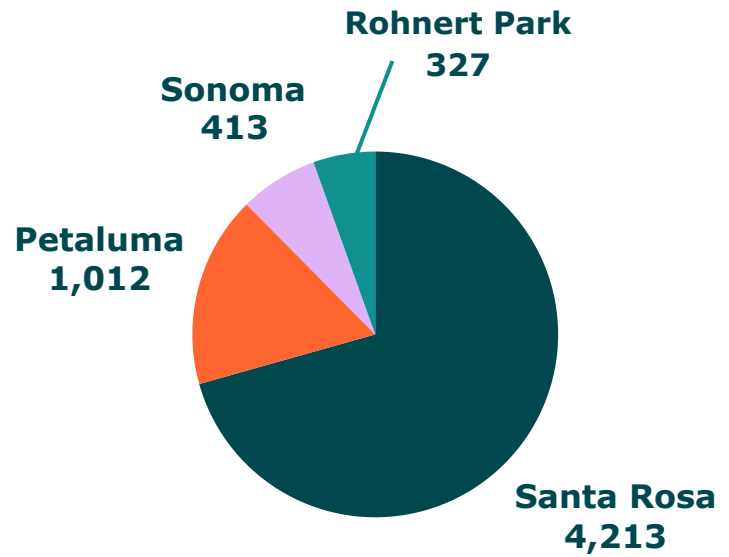
## Top In-Demand Skills by Number of Job Postings



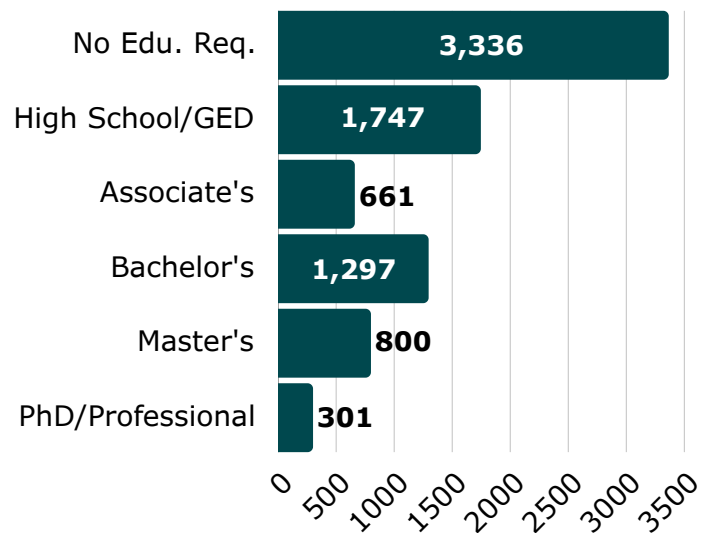
## Unique Monthly Job Postings



## Top Cities Posting



## Education Requirement by Job Posting



## BOARD OF DIRECTORS

# 7,108

Total Unique Postings

# 621

Competing Employers

# 28

Median Posting Duration

## Top Companies Hiring

Providence (1,121)

Kaiser Permanente (550)

Sutter Health (409)

AccentCare (131)

Maxim Healthcare Services (123)

## Top Soft Skills

Communication (2,305)

Management (1,627)

Customer Service (1,080)

Leadership (907)

Operations (745)

## Top Technical Qualifications

Basic Life Support (BLS) Certification (1,660)

Registered Nurse (RN) (1,376)

Valid Driver's License (801)

Cardiopulmonary Resuscitation (CPR) Certification (790)

Advanced Cardiovascular Life Support (ACLS) Certification (438)

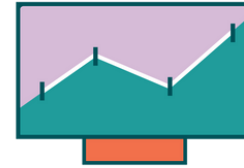
Licensed Vocational Nurse (LVN) (380)

Certified Nursing Assistant (CNA)

### BOARD OF DIRECTORS

# Annual Impact Analysis

Assessing the projected economic impact of a new healthcare facility in Sonoma County that adds 125 new jobs.



	Employment	Labor Income	Value Added	Output
<b>Direct</b>	<b>150</b>	<b>\$14.1 Million</b>	<b>\$18.4 Million</b>	<b>\$25.6 Million</b>
<b>Indirect</b>	<b>14.22</b>	<b>\$1.1 Million</b>	<b>\$2.1 Million</b>	<b>\$3.8 Million</b>
<b>Induced</b>	<b>44.15</b>	<b>\$2.8 Million</b>	<b>\$5.5 Million</b>	<b>\$8.4 Million</b>
<b>Totals</b>	<b>208.37</b>	<b>\$18.1 Million</b>	<b>\$26.1 Million</b>	<b>\$37.8 Million</b>

## SUMMARY

This analysis examines the estimated annual fiscal impact of a new healthcare facility in Sonoma County, California, represented by an employment size of 150. Key metrics of focus employment, labor income, value added, and output, which collectively highlight the healthcare sector's significant contributions to the local economy. By including direct (immediate revenue generated), indirect (economic activity generated from within the supply chain), and induced impacts (revenue in the local economy spurred by the spending of those employed), this analysis reflects the direct and indirect benefits of a healthcare facility hiring of this size, emphasizing its broader fiscal implications for employment and local economic activity in Sonoma County.

## METHODOLOGY & SOURCES

This report provides a snapshot of the job market for Sonoma County's healthcare industry between January and December, 2024. Data from unique job postings is collected by JobsEQ+ and Lightcast Analytics, including: top employers, occupational groups, job postings, median annual salaries, largest employers, economic impact analyses, and top skills and certifications. Lightcast and JobsEQ+ are unable to access any non-publicly posted jobs, so data may not reflect the hiring demands of all Sonoma County employers.

Interested readers are encouraged to contact data resource agencies for further research or to visit [www.sonomaedc.org](http://www.sonomaedc.org) for more information. Please direct all inquiries or suggestions for future reports to the EDC by calling (707) 565-7170 or emailing [edc@sonoma-county.org](mailto:edc@sonoma-county.org).

## FOUNDATION SPONSORS

### Presenting Level



### Premiere Level



### Executive Level

Morgan Stanley  
North Bay Association of REALTORS



[sonomaedc.org](http://sonomaedc.org)  
(707) 565-7170  
[edc@sonoma-county.org](mailto:edc@sonoma-county.org)

## BOARD OF DIRECTORS

**Ethan Brown, Executive Director**  
**Kathryn Philip, Chair**  
Skip Brand  
Meilin Tsao

Linda Kachiu  
Jordan Kivelstadt  
Wayne Leach  
Regina Mahiri

Richard Marzo  
Nick Schwanz